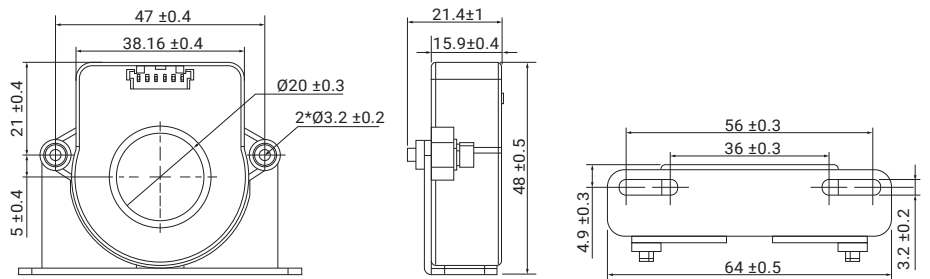
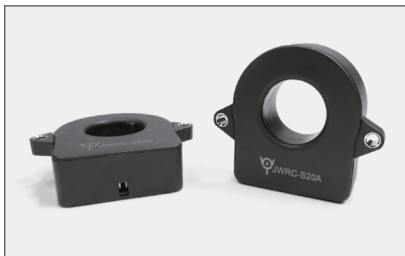
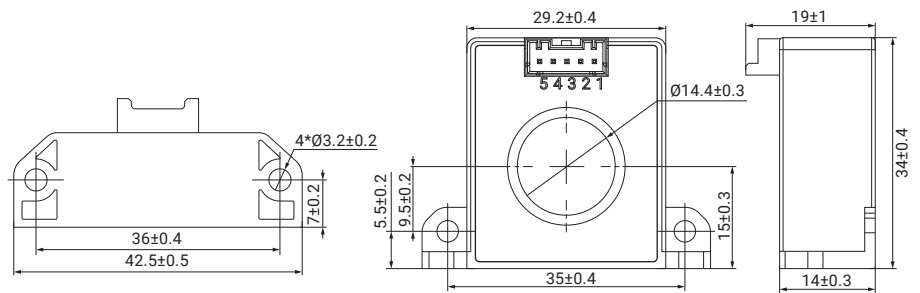


Series No. 型号	Primary Conductor Style 安装方式 & 初次侧连接方式	Maximum Primary Current 最大初级电流	Nominal Differential Current 差动电流	Measuring 量程	Output Mode 输出模式	Supply Voltage 供电电压	Max Current Consumption 最大消耗电流	Applicable Standards 适用标准	Type & Application 产品类型与应用
JWRC-S20A-DOF	Panel Mounting & Pass Through Opening 面板安装 & 引线穿孔式	40A / 80A	AC 30mA DC 6mA CCID20	120mA	Signal	+5V	20mA	IEC62955 UL2231 GB/T40820	<ul style="list-style-type: none"> Type B / B型 IC-CPD Wallbox / 壁挂式充电 Charging Pile / 充电桩



Series No. 型号	Primary Conductor Style 安装方式 & 初次侧连接方式	Maximum Primary Current 最大初级电流	Nominal Differential Current 差动电流	Measuring 量程	Output Mode 输出模式	Supply Voltage 供电电压	Max Current Consumption 最大消耗电流	Applicable Standards 适用标准	Type & Application 产品类型与应用
JWRC-S20A-DU1F	Panel Mounting & Pass Through Opening 面板安装 & 引线穿孔式	40A / 80A	CCID20	120mA	Signal	+5V	30mA	UL2231	<ul style="list-style-type: none"> Type B / B型 IC-CPD Wallbox / 壁挂式充电



Series No. 型号	Primary Conductor Style 安装方式 & 初次侧连接方式	Maximum Primary Current 最大初级电流	Nominal Differential Current 差动电流	Measuring 量程	Output Mode 输出模式	Supply Voltage 供电电压	Max Current Consumption 最大消耗电流	Applicable Standards 适用标准	Type & Application 产品类型与应用
JWRC-S14A-DI1F	Panel Mounting & Pass Through Opening 面板安装 & 引线穿孔式	40A / 80A	AC 30mA DC 6mA	120mA	Signal	+5V	20mA	IEC62752 GB/T41589	<ul style="list-style-type: none"> Type A+6mA / A+6mA型 IC-CPD Wallbox / 壁挂式充电 Charging Pile / 充电桩