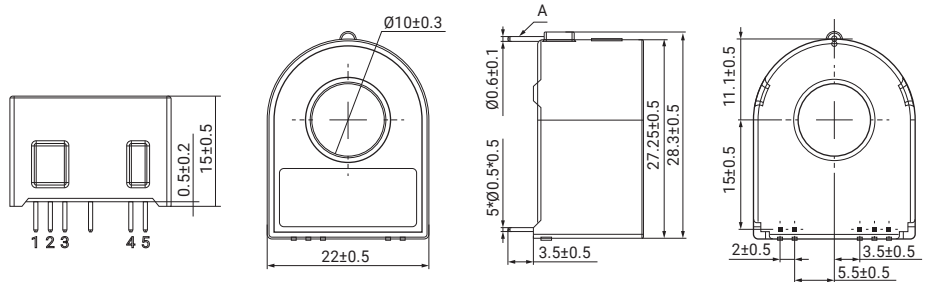
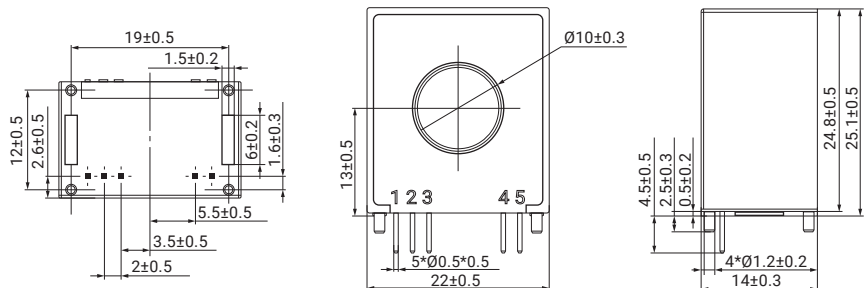
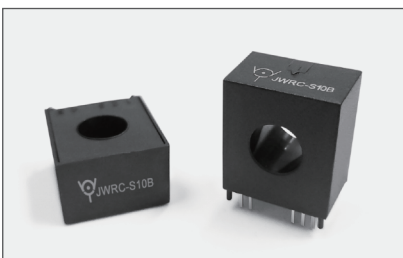


Series No. 型号	Primary Conductor Style 安装方式 & 初次侧连接方式	Maximum Primary Current 最大初级电流	Nominal Differential Current 差动电流	Measuring Range 量程	Output Mode 输出模式	Supply Voltage 供电电压	Max Current Consumption 最大消耗电流	Applicable Standards 适用标准	Type & Application 产品类型与应用
JWRC-R14E-DI1P	PCB & Pass Through Opening PCB安装 & 引线穿孔式	40A / 80A	AC 30mA DC 6mA	150mA	Signal	+5V	40mA	IEC62752 GB/T 41589	<ul style="list-style-type: none"> <li>Type B / B型</li> <li>IC-CPD</li> <li>Charging Pile / 充电桩</li> <li>Ground Fault Monitoring / 接地故障监测</li> </ul>
JWRC-R14E-DOP	PCB & Pass Through Opening PCB安装 & 引线穿孔式	40A / 80A	AC 30mA DC 6mA CCID20	150mA	Signal	+5V	40mA	IEC62752 UL2231 GB/T 41589	<ul style="list-style-type: none"> <li>Type B / B型</li> <li>IC-CPD</li> <li>Charging Pile / 充电桩</li> <li>Wallbox / 壁挂式充电桩</li> </ul>
JWRC-R14E-DIP	PCB & Pass Through Opening PCB安装 & 引线穿孔式	40A / 80A	AC 30mA DC 6mA	150mA	Signal	+5V	40mA	IEC62752 GB/T 18487-2015 IEC62955	<ul style="list-style-type: none"> <li>Type B / B型</li> <li>IC-CPD</li> <li>Charging Pile / 充电桩</li> <li>Ground Fault Monitoring / 接地故障监测</li> </ul>



Series No. 型号	Primary Conductor Style 安装方式 & 初次侧连接方式	Maximum Primary Current 最大初级电流	Nominal Differential Current 差动电流	Measuring Range 量程	Output Mode 输出模式	Supply Voltage 供电电压	Max Current Consumption 最大消耗电流	Applicable Standards 适用标准	Type & Application 产品类型与应用
JWRC-R10A-DI1P	PCB & Pass Through Opening PCB安装 & 引线穿孔式	20A	AC 30mA DC 6mA	120mA	Signal	+5V	20mA	IEC62752 GB/T 41589	<ul style="list-style-type: none"> <li>Type B / B型</li> <li>IC-CPD</li> <li>Charging Pile / 充电桩</li> <li>Wallbox / 壁挂式充电桩</li> </ul>



Series No. 型号	Primary Conductor Style 安装方式 & 初次侧连接方式	Maximum Primary Current 最大初级电流	Nominal Differential Current 差动电流	Measuring Range 量程	Output Mode 输出模式	Supply Voltage 供电电压	Max Current Consumption 最大消耗电流	Applicable Standards 适用标准	Type & Application 产品类型与应用
JWRC-S10B-DIP	PCB & Pass Through Opening PCB安装 & 引线穿孔式	20A	AC 30mA DC 6mA	120mA	Signal	+5V	20mA	IEC62752 IEC62955 IEC62423 GB/T 41589 GB/T 40820	<ul style="list-style-type: none"> <li>Type B / B型</li> <li>IC-CPD</li> <li>Charging Pile / 充电桩</li> <li>Wallbox / 壁挂式充电桩</li> </ul>